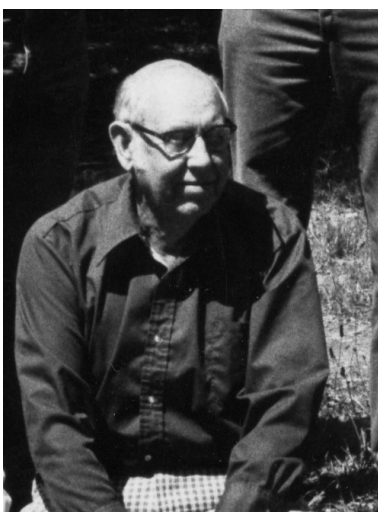


Earth and Planetary Sciences Department, UC Santa Cruz

☯️ Development Fact Sheet: Waters Fund ☯️

Updated: 15 August 2018

Purpose: The Aaron and Elizabeth Waters Student Research Fund is named in honor of the founding Chair of Earth Sciences at EPS and his wife. This fund supports graduate students in the Earth and Planetary Sciences (EPS) Department at UCSC as they conduct thesis-related research. Historically, the department has made annual awards from the Waters Fund to the most meritorious research proposals submitted each year as part of PhD students qualifying for candidacy. The Waters Fund endowment is now also contributing to graduate fellowship support.



History: Aaron Waters had a distinguished career in Earth Sciences spanning >60 years, publishing his first paper in 1927, and founding the Earth Sciences program at UCSC in 1967. He was elected to the National Academy of Sciences in 1964, and received the Penrose Medal from the Geological Society of America in 1982. Dr. Waters worked on a wide variety of problems in the fields of volcanology, igneous petrology, mineral resources, lunar geology, and the regional geology of the Pacific Northwest. Dr. Waters retired from UCSC in 1972, and donations from his former students, colleagues, and friends led to the establishment of this fund. The Aaron and Elizabeth Waters Student Research Fund recognizes the important roles that Elizabeth played in educating generations of students.

Status: The Waters Fund endowed with ~\$275k. Income from the fund supports graduate fellowships and annual awards for outstanding PhD thesis proposals. Awards are made on a competitive basis each year. ☯️

Long-term Goal: Our long-term goal is to grow the endowment to \$1M, to generate the equivalent a full academic year of graduate student support.

Our Request: Please contribute to the Waters Fund and help to support EPS undergraduate and graduate student researchers. You could make a one-time donation or pledge to give annually.

☯️ The Earth and Planetary Sciences Department at UCSC will update information on the status of the Waters Fund at the EPS website: <http://eps.ucsc.edu/support-us/>

Please see information on the back of this flyer for detailed information about how to give.
Thank you for your support of Earth and Planetary Sciences at UCSC! ☯️

How to Give to the Earth and Planetary Sciences Department at UCSC

(1) Please Give Online

Please visit the EPS web site for information on current funds/endowments and EPS Department priorities: <http://eps.ucsc.edu/support-us/>

You will find a list of fund/endowment descriptions, and links that will connect you directly to an online form (through the UCSC Online Giving page).

(2) Please Give by Check or Credit Card

Please use the form below to prepare your donation.

(3) Please Call or Email for Information

We are glad to discuss your interest in supporting EPS at UCSC, and to provide information that may be helpful in directing your contribution to be consistent with your interests. Please contact:

- Matthew Clapham (Department Chair): (831) 459-1276, mclapham@ucsc.edu
- Lisa Stipanovich (Department Manager): 831-459-4478, lms@ucsc.edu
- Andy Fisher (EPS Development Coordinator): 831-459-5598, afisher@ucsc.edu

(4) Please check with your employer to see if they will match your donation!

Donations made to the EPS Department at UCSC are tax deductible, to the extent permitted by law. Please check with your tax preparer to assess how your donations may be deducted. All donations to the Earth's Environment Research Fund will be added to the endowment, with the vast majority of proceeds generated by the endowment going to EPS students. A fraction of the Earth's Environment Research Fund may be used to defray costs of raising and administering these resources.

----- **Form for Giving to Earth and Planetary Sciences at UCSC** -----

Donor Name(s): _____

Address: _____

Email: _____ Telephone: _____

Gift amount: \$ _____ Gift designation: _____

Please see listing of gift options at the EPS (<http://eps.ucsc.edu/support-us/>) or call one of the numbers above for more information.

Please attach a check payable to the UC Santa Cruz Foundation (with fund/endowment designation written under "Memo"), or enter credit card information:

Credit Card Type: Visa MC Discover AmEx

Credit Card #: _____ Expiration Date (Mo/Yr): _____

Name on Card: _____ Signature: _____

Yes! I want to increase my support with this matching gift.

My company will match my gift (company name): _____

Please mail to: UC Santa Cruz, MS: PBSci Development, 1156 High St., Santa Cruz CA 95064